

# Flow-Through Fittings



## ARF 215 Flow-Through Fitting

Highly variable flow-through fitting line made of plastic

Modular system design with different connection geometries and process connections. For measurements in main stream or bypass. Adapter for a broad variety of sensors for pH, ORP, temperature, contacting and noncontacting conductivity, as well as dissolved oxygen.

Available protective cap with integrated electrolyte reservoir for refillable pH sensors with liquid filling. Simplified calibration for pH and conductivity due to special calibration beaker. A large flow cross-section and integrated cleaning nozzles also make it suitable for polluted media.

### Applications

- PP-H: Drinking water, industrial water, and cooling water
- PVDF: Increased chemical resistance; for corrosive process media up to 87 psi (6 bar) and 212°F (100°C)

### Facts

- Modular system adaptable to virtually every process due to different
  - sensor adapters
  - materials
  - process connections
- Materials: PP-H or PVDF
- Measurement in main stream or bypass
- Cleaning connection

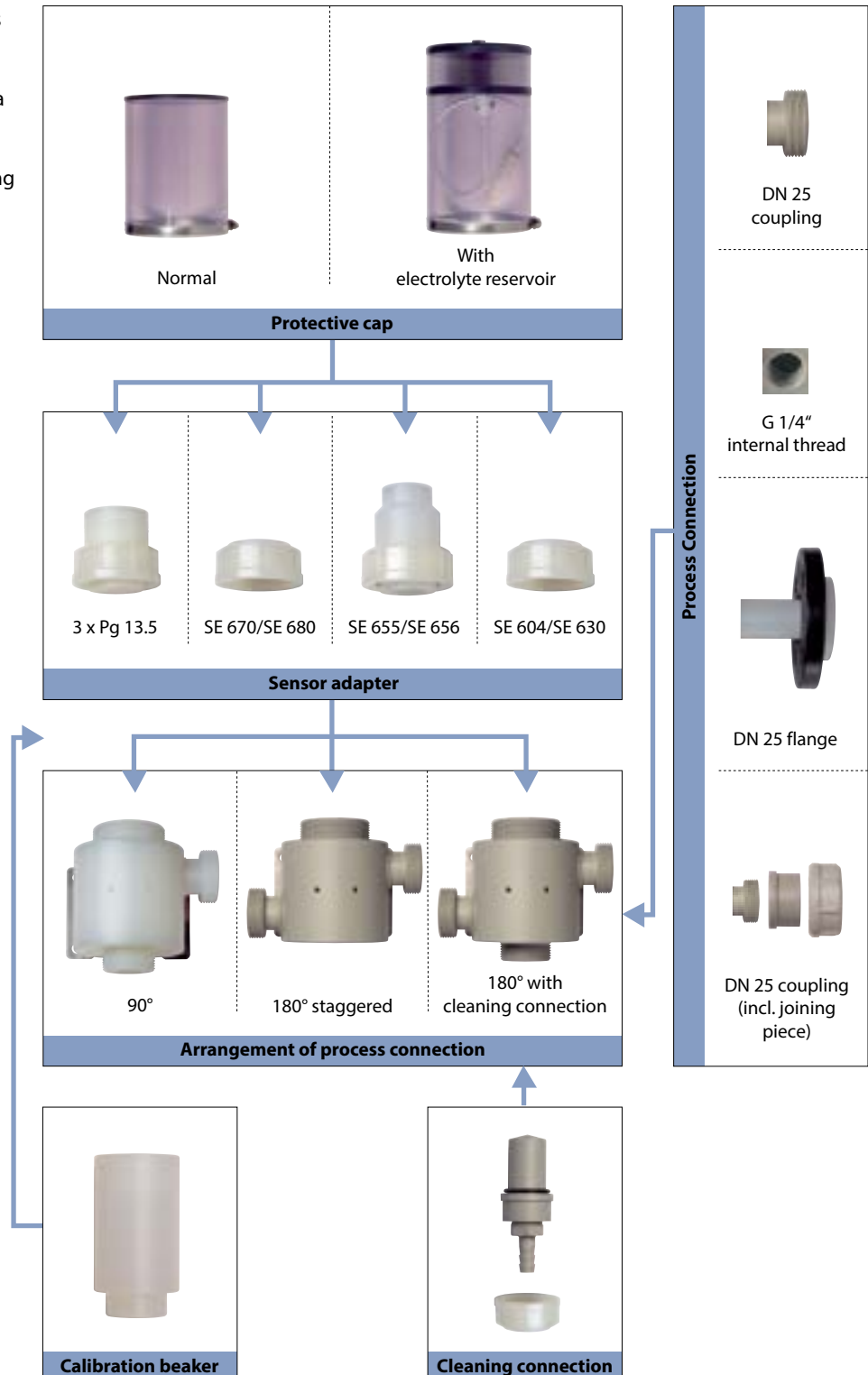
### Specifications

Material:	PP-H, PVDF
Process connection:	DN 25 coupling G 1/4" DN 25 flange DN 25 coupling (incl. joining pieces)
Sensor adapter:	3 x Pg 13.5 SE 655 (X)/SE 656 (X) SE 604/SE 630 SE 670/SE 680
Pressure:	PP-H: 22 psi (1.5 bar) 194°F (90 °C), 87 psi (6 bar) 104°F (40 °C) PVDF: 43 psi (3 bar) 248°F (120 °C), 87 psi (6 bar) 212°F (100 °C)
Temperature:	PP-H: 32 ... 194°F (0 ... 90 °C) PVDF: -4 ... 248°F (-20 ... 120 °C)



**Modular System**

This flow-through fitting is available with 3 different process connections. Different protective caps, a calibration beaker, sensor adapters, process connections, and a cleaning connection complete this modular system.



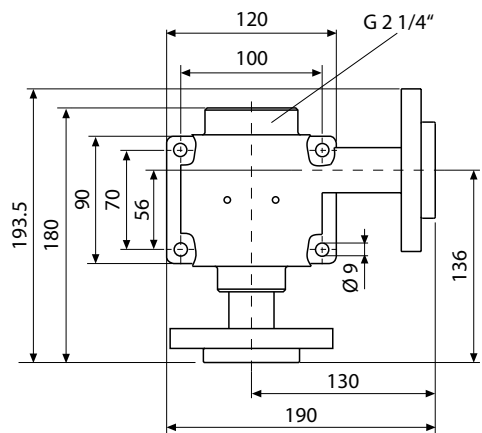
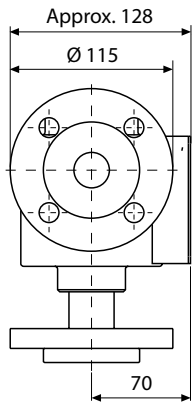
# Flow-Through Fittings

## ARF 215 Flow-Through Fitting

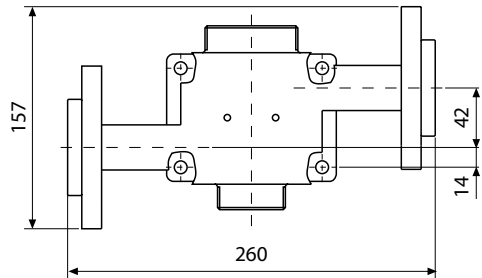
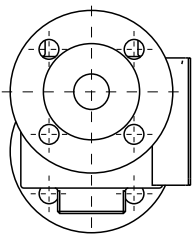
Product Line		Order No.				
		ARD 215 /				
<b>Material</b>	PP-H	1				
	PVDF	2				
<b>Sensor adapter</b>	3 x Pg 13.5	1				
	SE 655 (X)/SE 656 (X)	4				
	SE 604/SE 630	7				
	SE 670/SE 680	E				
<b>Process connection</b>	DN 25 coupling		1			
	G 1/4"		2			
	DN 25 flange		3			
	DN 25 coupling (incl. joining pieces)		5			
<b>Arrangement of process connection</b>	90°			1		
	180° staggered			2		
	180° with cleaning connection <sup>1)</sup>			3		
<b>Protective cap</b>	none				0	
	normal				1	
	with electrolyte reservoir				2	
<b>Calibration beaker</b>	without				0	
	with				1	
<b>Sealing material</b>	EPDM					1
	FKM (Viton)					2
	FFKM (Kalrez)					3

<sup>1)</sup> Only in conjunction with sensor adapter 3 x Pg 13.5

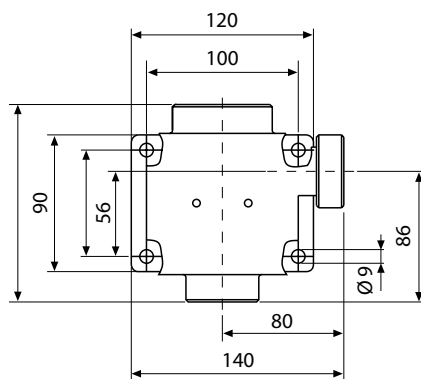
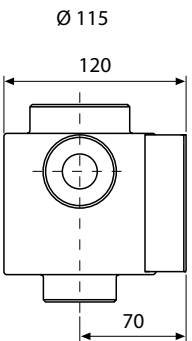
Other versions on request.



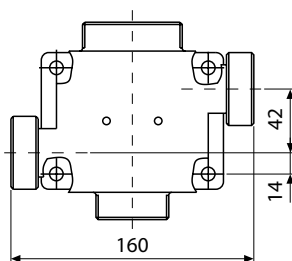
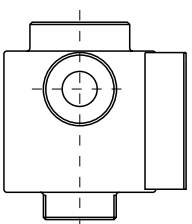
DN 25 flange, 90°



DN 25 flange,  
 180° staggered with connection  
 for cleaning system



DN 25 coupling, 90°

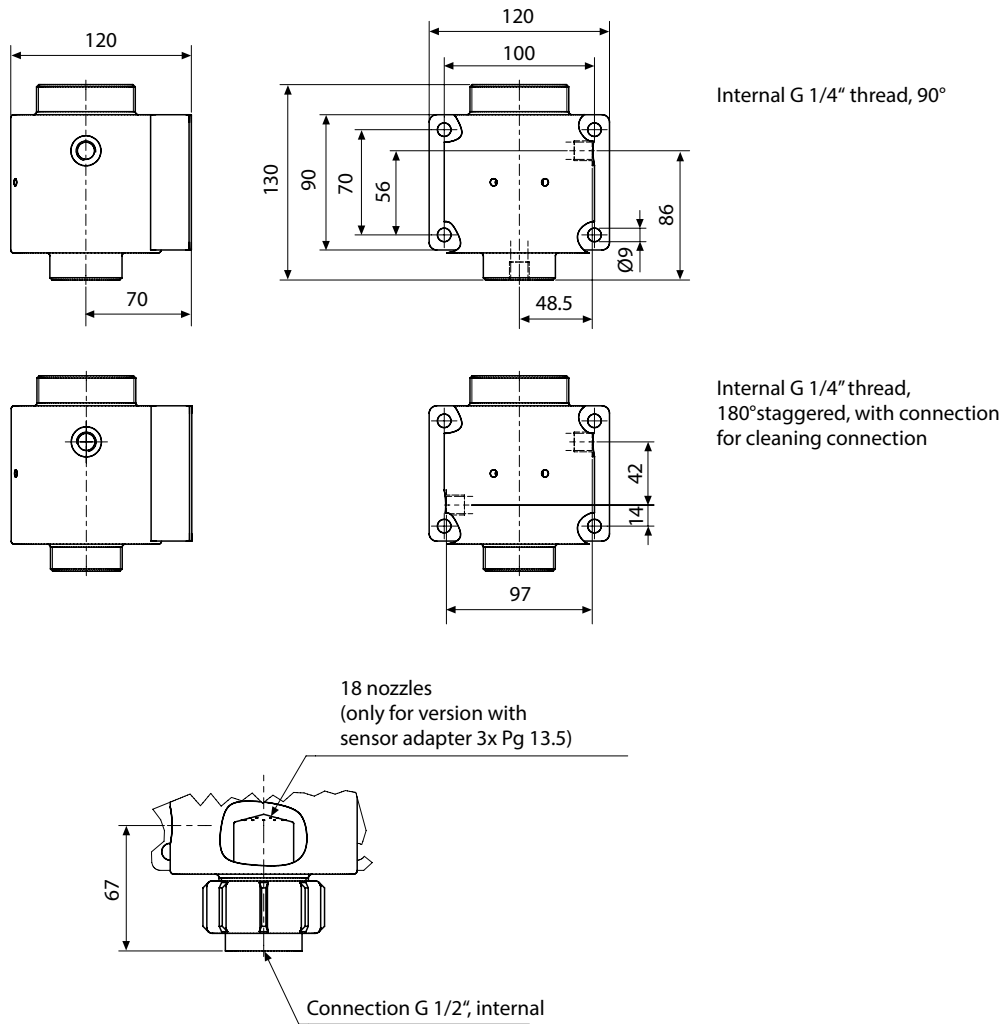


DN 25 coupling, 180°  
 staggered with connection  
 for cleaning system

# Flow-Through Fittings

## ARF 215 Flow-Through Fitting

### Dimensional Drawings – continued





Pressure/Temperature Diagrams

