



Eurotherm Data Reviewer

Explore Your Process Data Anytime, Anywhere

Martech Controls
2000 Teall Avenue
Syracuse, NY 13026
Tel: (315) 876-9120
www.martechcontrols.com
sales@martechcontrols.com

Life Is On

Eurotherm
by Schneider Electric

Display, analyze, print and share historical data files how you want to, when you want to.

Eurotherm Data Reviewer is a software application designed for the viewing, analysis and printing of historical data files acquired from Eurotherm data acquisition equipment such as, but not limited to:

- Paperless graphical recorders – 6000 series
- Hybrid recorders/controllers – nanodac™ recorder/controller range
- Programmable Automation Controllers - T2750 PAC

A Bit of History

Eurotherm first introduced paperless data logging on the 4200 series recorder in 1993 using a proprietary PKD file format. Since then, Eurotherm has introduced electronic records on a wide range of its products using an enhanced higher integrity file format containing improved metadata, known as UHH. Eurotherm Data Reviewer is capable of reading UHH files from any of these devices.

Data Viewing Styles

- Horizontal linear chart
- Circular chart
- CSV export

Find Data Quickly

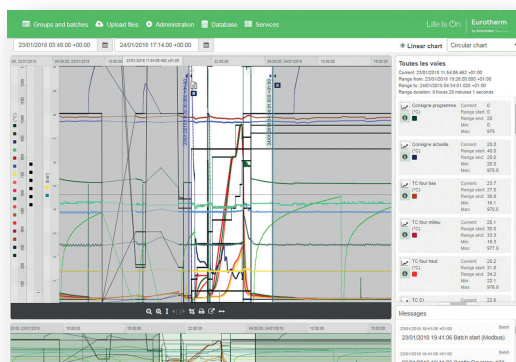
Imported data is automatically organized by group and batch. Data can be refined further by changing the data range, searching for recording devices by name/recording group from automatically generated lists, or simply start typing in the name of the device/record.

Analyze Data More Efficiently with a Dual Cursor Mode

A single line cursor, positioned within the chart area, presents process variable details for the visible channels at that point on the timeline. A second vertical cursor can be used to select a data range on which to perform analysis.

Easily Approve Data for Release

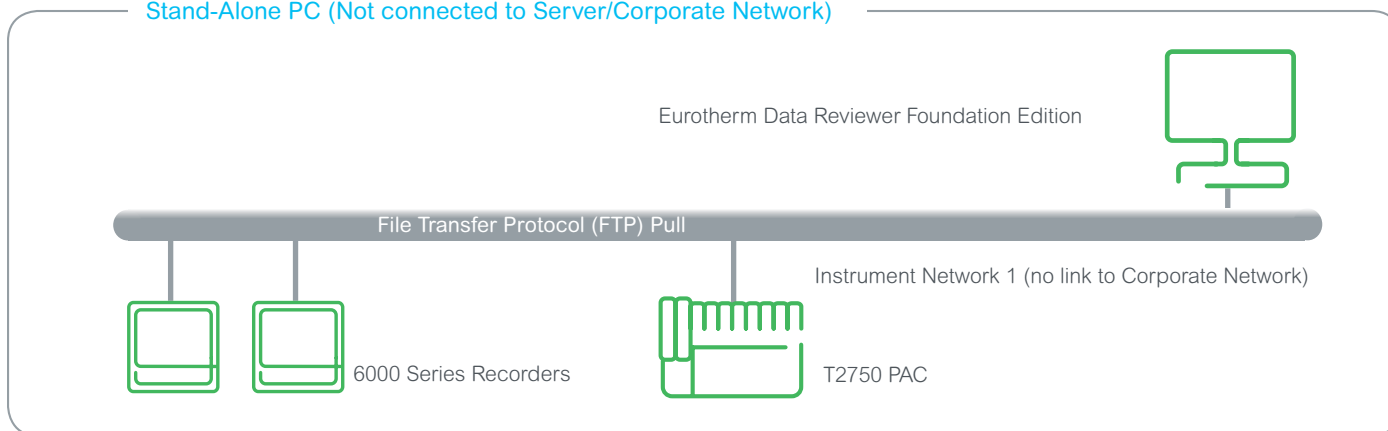
Annotations, such as comments or authorization signatures can be added at any point during the analysis. The annotation is subsequently stored alongside the original data for easy retrieval at a later date.



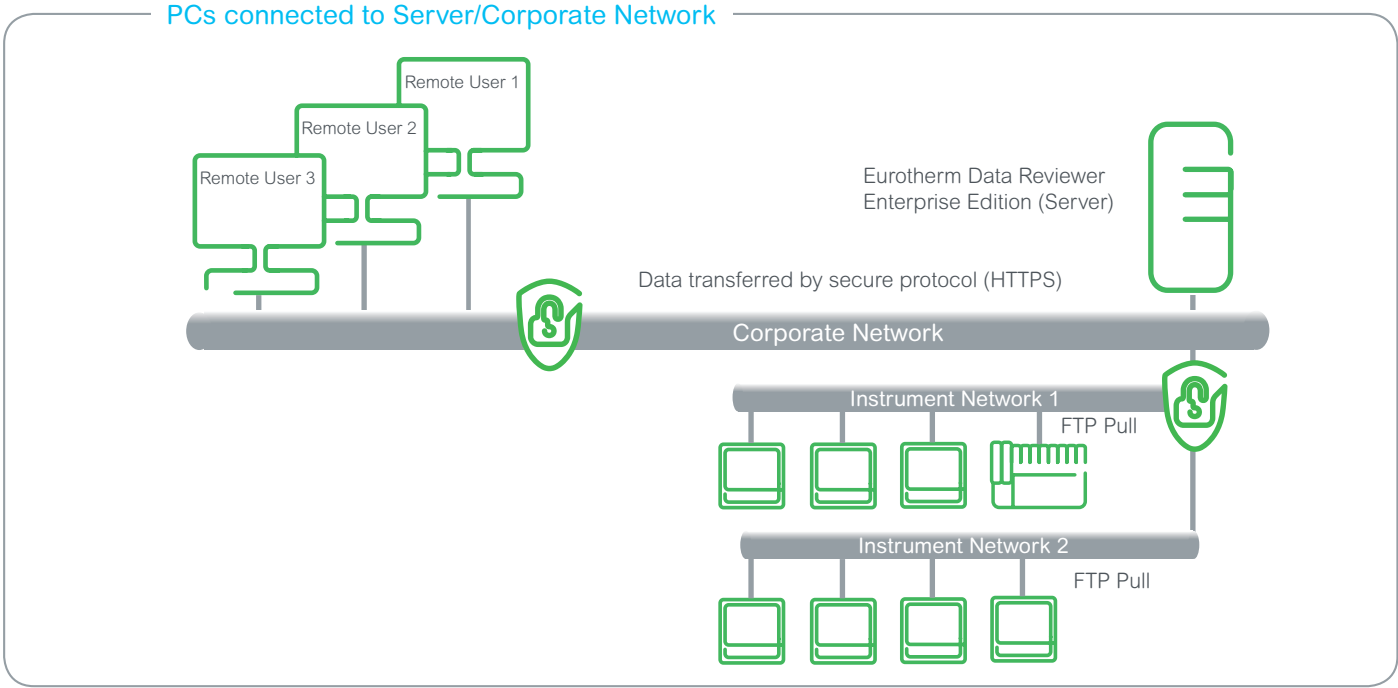
Dual Cursor

Foundation Edition

Stand-Alone PC (Not connected to Server/Corporate Network)



Enterprise Edition



Access Data More Easily

Historical data (UHH or PKD file format) can be imported automatically from Ethernet capable devices or direct from a local FTP Server. Batch charts can be automatically printed to a specified printer, upon batch completion. The frequency at which data is transferred can be set by the system administrator.

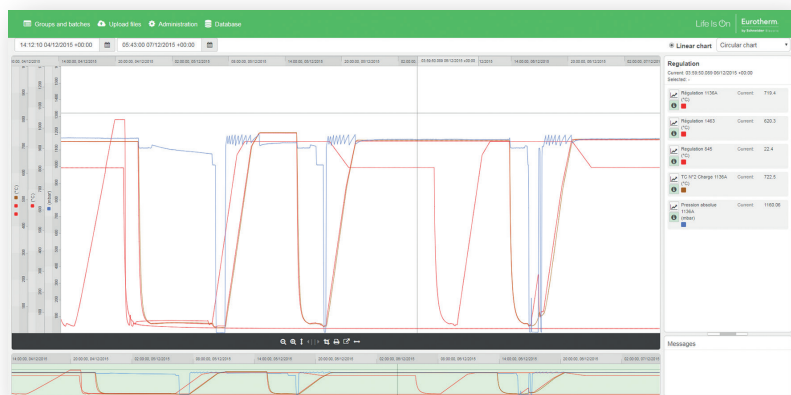
Foundation Versus Enterprise Edition

Eurotherm Data Reviewer offers two variants, Foundation Edition for small stand-alone instrument networks, and Enterprise Edition, a server based version with unrestricted database size and multi user access.

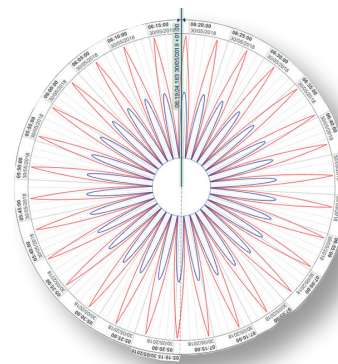
Data Reviewer Foundation Edition is free to download here: eurotherm.com/reviewer

Features	Foundation	Enterprise
Data conversion tool: support for UHH files generated by Eurotherm devices	●	●
Import data from removable media	●	●
Import data direct from connected devices	●	●
Print all graph data including messages	●	●
CSV export	●	●
Automatic data transfer (pull mode)	●	●
Horizontal trend view/print	●	●
Circular trend view/print	●	●
Multi-user access		●
Maximum database size	60GB	None
Reports		*
Analytics		*
Thermal Uniformity Surveys (TUS)	*	*
Auditor		*
Off site storage and retrieval		*

*future



Trend View



Circular Chart

Eurotherm Data Reviewer Foundation Edition Requirements

	Minimum	Recommended
Operating System	Windows® 7 (64-bit) with Service Pack 1, Windows® 8.1 or Windows® 10	Windows 10 (64-bit, Professional or Enterprise)
Browser	Chrome™ 58 or higher, IE11 or Edge	Chrome 58 or higher
RAM	4GB	8GB
Processor	2GHz, Intel® Pentium® processor* or equivalent	2GHz, Intel® Pentium® processor or equivalent
Disk Space	60GB of free hard disk space	60GB of free hard disk space

*Intel and the Intel logo are trademarks of Intel Corporation or its subsidiaries in the U.S. and/or other countries

Eurotherm Data Reviewer Enterprise Edition Requirements

	Minimum	Recommended
Operating System	Windows Server® 2012 R2 or Windows Server® 2016	Windows Server 2012 R2
Browser	Chrome 58 or higher, IE11 or Edge	Chrome 58 or higher
RAM	16GB	16GB
Processor	2.7 GHz, Intel Core™ i7 processor or equivalent	2.7 GHz, Intel Core™ i7 processor or equivalent
Disk Space	1TB minimum	1TB minimum

Discover more about how to share and save your data files

Martech Controls
 2000 Teall Avenue
 Syracuse, NY 13026
 Tel: (315) 876-9120
www.martechcontrols.com
sales@martechcontrols.com

