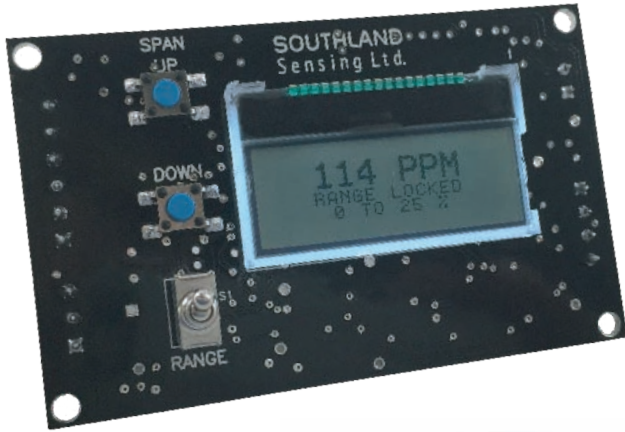


Configurable OEM Oxygen Transmitter, 6-wire



Well Suited for OEM Installations

Precision Fuel Cell Oxygen Sensor Technology

Trace or Percent Configuration

Measure Oxygen from 0.1ppm to 100%

4 - 20mA, 0 - 1V DC, 0 - 10V DC Outputs

Updated Microprocessor Based Design

Cost Effective, Compact & Low Maintenance

Configurations:

User Selectable Ranges (Pre-Configured):

0 - 10ppm/100/1000ppm/1%/5%/10%/25%/100%

Digital Push Buttons to Perform Local Span Cal

Sensor Housings: H6 KF-40 or H3 Flow Through

Graphical Display with Backlight

Many additional customized options available

Integral Span Pot to Adjust 4mA Offset

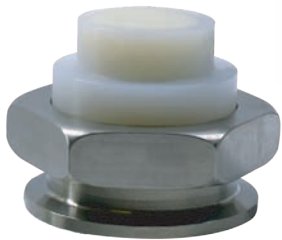
Specifications:

Accuracy:	< 1% Full Scale Range*
Calibration:	2 - 3 months or as needed
Classification:	General Purpose
Dimensions (PCB):	3.25 x 2.00 inch
Display:	Optional
Temperature:	0 - 50 deg C
Temperature Compensation:	Integral
Output:	4 - 20mA, 0 - 1VDC, 0 - 10VDC
Sensor Housing:	Optional, H6 or H3
Flow Sensitivity:	0.5 - 5.0 SCFH
Sensor Type:	Precision Fuel Cell
Warranty:	12 Months Sensor
Warranty:	12 Months Electronics

\*Accuracy at constant conditions



H3 Flow Through  
Sensor Housing



H6 KF-40  
Sensor Housing



Oxygen Sensor

Applications:

- Inert Glove Box Systems
- Nitrogen and O2 PSA Generators
- Laboratories & Universities
- Beverage Grade CO2 Monitoring
- Air Separation Plants  
& Many Others

"Inquiry for Application Expertise"

## Oxygen Transmitter:

The model EMD-485 oxygen transmitter combines a rugged electronic design with SSO2's precision oxygen sensors. The result is a highly reliable and cost effective compact design with an easy-to-use user interface.

The transmitter comes with a variety of options, which makes it configurable for a large array of applications. These options include custom ranges from 0 - 10ppm through 0 - 100%, a local display, sensor housings for flow through applications and ambient monitoring, as well as a variety of oxygen sensors. See the below ordering guide for complete options.

## Power Requirements:

Input Power: 12 - 24 V DC  
Current Draw: 40 mA (max)

## Oxygen Sensor Technology:

The oxygen sensor used in the EMD-485 is based on the galvanic electrochemical fuel cell principal. All oxygen sensors are manufactured in house by Southland Sensing Ltd. under a strict quality program.

The standard cells are unaffected by other background gases such as H<sub>2</sub>, He or Hydrocarbons. The acidic cells work well when acid gases such as CO<sub>2</sub> or Natural Gas are present.

The sensors are self-contained and minimal maintenance is required - no need to clean electrodes or add electrolyte.

The SSO2 precision oxygen sensors offer excellent performance, accuracy and stability while maximizing the expected life.

## Oxygen Sensors:

TO2-1x PPM Oxygen Sensor: Trace Analysis, Standard  
TO2-2x PPM Oxygen Sensor: Trace Analysis, Acidic  
PO2-160 Percent Oxygen Sensor: Percent Analysis, Standard  
PO2-24 Percent Oxygen Sensor: Percent Analysis, Acidic

Oxygen sensors should be periodically calibrated. Factory recommendation is every 2 - 3 months or as the application dictates. Sensors offer excellent linearity with an air calibration, or calibrate to a certified span gas to maximize accuracy.

## Order Information:

Record Part Number with selected options in Blank Indicated Area of Form

**Model Number:**  
EMD-485 Oxygen Transmitter

**Optional Display:**  
D Local Display with Backlight  
X No Display, Blind

**Area of Analyzers**  
T Trace Analysis  
P Percent Analysis

**Optional Sensor:**  
1 Trace Analysis Standard (TO2-1x): 0 - 10ppm, 0 - 100ppm, 0 - 1000ppm, 0 - 1%, 0 - 25%  
2 Trace Analysis Acidic (TO2-2x): 0 - 10ppm, 0 - 100ppm, 0 - 1000ppm, 0 - 1%, 0 - 25%  
5 Percent Analysis Standard (PO2-160): 0 - 1%, 0 - 5%, 0 - 10%, 0 - 25%, 0 - 100%  
6 Percent Analysis Acidic (PO2-24): 0 - 1%, 0 - 5%, 0 - 10%, 0 - 25%, 0 - 100%

**Optional Sensor Housing:**  
8 H3 Flow Through with 1/8" Compression Tube Fittings  
4 H3 Flow Through with 1/4" Compression Tube Fittings  
6 H3 Flow Through with 6mm Compression Tube Fittings  
K H6 KF-40 Sensor Housing (ideal for Ambient Monitoring or Glove Box Applications)

**Optional Factory Pre-Set 2nd Range:**  
If you want the factory to pre-set a 2nd range, please list the value here:  
| (i.e. 0 - 10ppm, 0 - 100ppm, 0 - 10%, etc.)

Use This Part Number When Ordering

\*\* For assistance when ordering, contact our inside sales specialist \*\*

EMD-485 - - - - -

**ETA Process Instrumentation**

www.etapii.com  
sales@etapii.com  
tel 978.532.1330

*New England*

**Martech Controls**

www.martechcontrols.com  
sales@martechcontrols.com  
tel: 315.876.9120

*Upstate New York*